

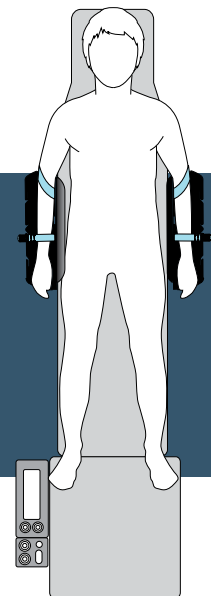


ARMSURE

The ideal system for arm immobilisation, protecting the sterile field with the added benefit of reducing scatter radiation.

ARMSURE

The ideal system for arm immobilisation, protecting the sterile field with the added benefit of reducing scatter radiation.



The ArmSure is particularly useful in the increasing number of procedures performed under conscious sedation where patient restlessness can be an issue. The optional IR Shield provides enhanced clinician safety through additional scatter radiation protection.

The ArmSure prevents a restless patient from compromising the sterile femoral access site while presenting the forearm for IV lines, anaesthesia, etc., throughout the procedure. The ArmSure gently secures both arms of a supine patient in a comfortable adducted position with soft, easy to install, adjustable straps. The unique design allows the straps to be loose while maintaining arm security and patient comfort.

The ergonomic design comfortably supports the patient's arms at an optimal height, fits all lab table models, works on both sides of the image table and suits a wide variety of patient sizes.



Efficient set-up

Using the ArmSure is efficient, quick and repeatable as it allows for single person set-up, replacing the conventional arm towel/sheet tuck. It also works with common gel pads for additional patient comfort.

The ArmSure is placed under the sterile drape and is easy to clean. High-performance plastic materials have been selected for excellent resistance to chemical attack from commonly used cleaning products. The straps are made from a soft, durable polyurethane and are also easy to clean.

ArmSure

The ArmSure is the ideal immobilising arm support, without the additional X-Ray Shield this can be pushed in closer to the image table for C-Arm clearance and clinicians who prefer to work closer to the patient.

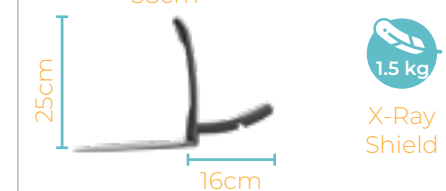
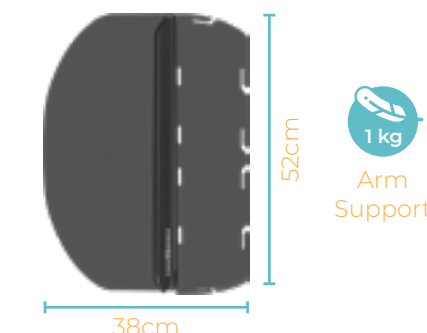


Key Features and Benefits

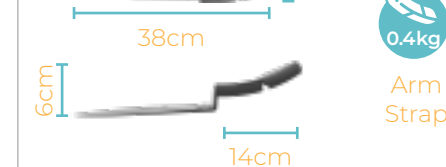
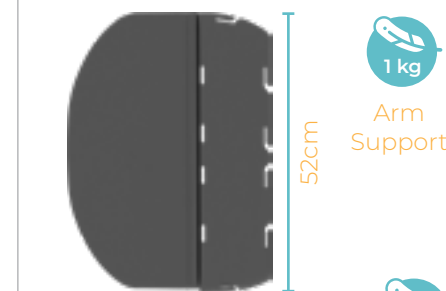
- | Gently secures arm
- | Protects sterile field
- | Soft pliable straps
- | Quick set-up
- | Patient comfort
- | Optional X-Ray Shield
- | Fits all tables
- | Clinician designed

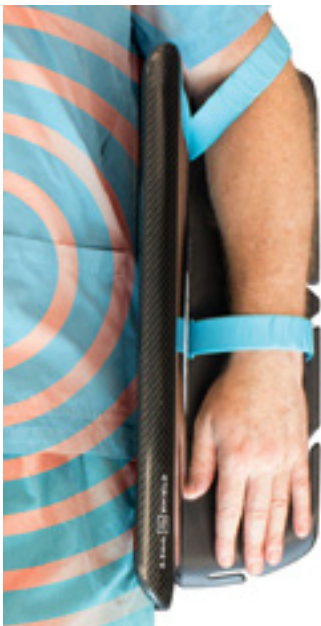
Specifications

ArmSure + Shield (AM0610)



ArmSure (AM0640)



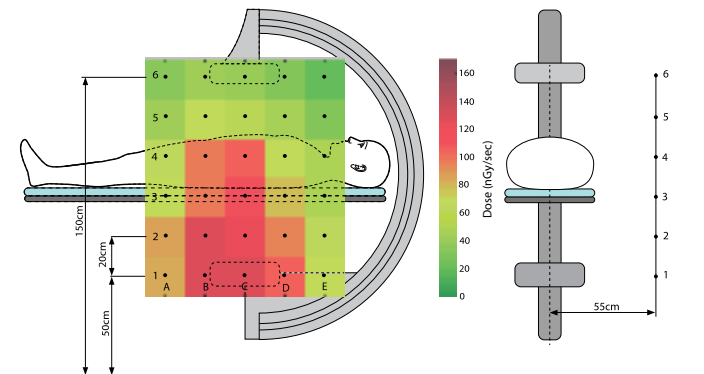
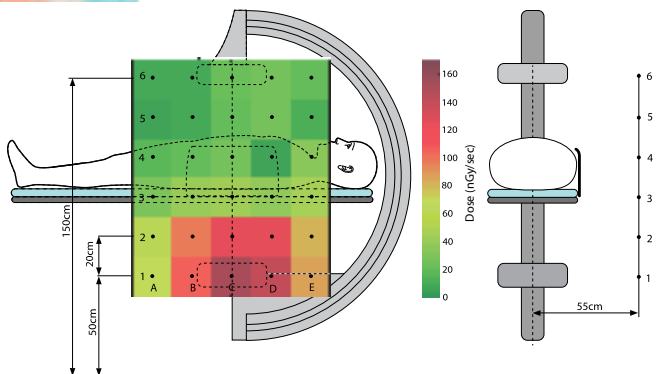


ArmSure + Shield 0.5mm Lead (Pb)

The ArmSure + Shield is the ideal immobilising arm support, but with additional scatter radiation protection, containing an X-Ray Shield embedded with 0.5mm of Lead (Pb) enclosed in Carbon Fibre.



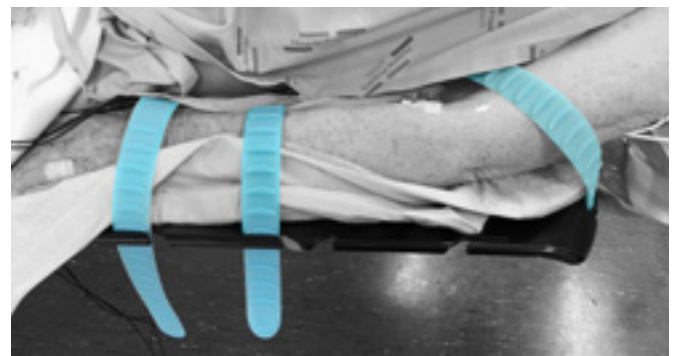
Full Scatter
Radiation
Report



Zero Gantry Tilt Operator Dose - With Shield

Zero Gantry Tilt Operator Dose - No Shield

Applications



Fields you can use this device



Interventional Radiology



Peripheral Intervention



Interventional Cardiology



General Surgical



Interventional Neuroradiology



Manufacturer
Adept Medical Ltd
2-6 McDonald St,
Morningside
Auckland 1025, New Zealand