

 EN



 | [adeptmedical.com](https://www.adeptmedical.com)

ADEPT

Medical  
Supporting you

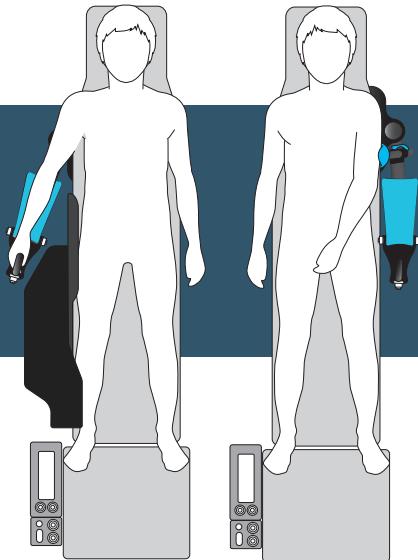


# STARSYSTEM

The STARSsystem comprises of the STARBoard, STARSupport and STARTable to form a complete, clinically engineered solution for right side radial access.

## STARSYSTEM

The STARSystem comprises of the STARBoard, STARSupport and STARTable to form a complete, clinically engineered solution for right side radial access.



The STARSystem facilitates ease of radial access during Interventional Cardiology procedures, while enhancing the operational environment.



Designed to work with any cardiac or radiology procedure table, the STARSystem is quick to install and adjust to variations in patient size. Set-up is achieved in seconds with no consumable components required.



STARBoard and STARSupport



STARBoard and STARTable



Distal and Proximal Radial Access

### STARBoard

The STARBoard allows for rapid, effective presentation and procedural ease when considering both distal and proximal radial access.

The key function of the STARBoard is its ability to present the patients wrist in the extended position whilst access is achieved, then simply return it to a more relaxed, medially-rotated position, with the arm at their side for the duration of the procedure. Adjustments can be made at any point during the procedure beneath the sterile drapes.



Crafted in carbon fibre for superior strength, radiolucency and durability, the STARBoard is extremely light weight and compact.

The unique, one-piece, "foldaway" design makes it easy for nursing staff to handle and takes up minimal storage space.



### Arm Support Pad

The Arm Support Pad is a custom designed solution for patient pressure management. Made with a viscoelastic memory-foam core, the Arm Support Pad is removable, durable, easy to clean and more radiolucent compared to commonly used gel pads.

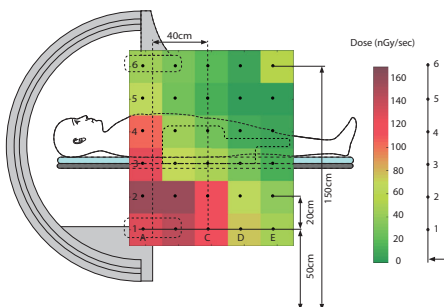


Full Scatter Radiation Report

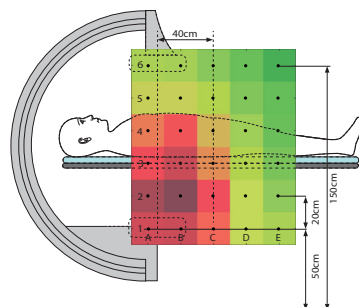
[adeptmedicaltraining.com/scatterradiation](http://adeptmedicaltraining.com/scatterradiation)

### STARTable

The STARTable provides clinicians with an adjustable work surface and protection from scatter radiation.



With STARTable

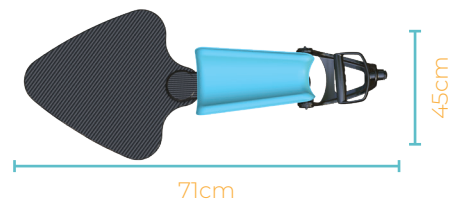


Without STARTable

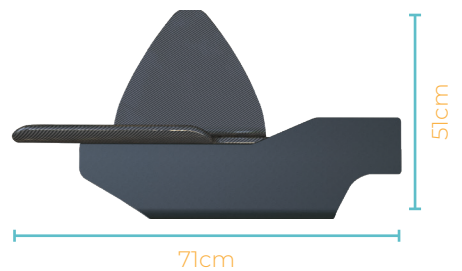
### Key Features and Benefits

- | Clinically designed
- | Scatter radiation shielding
- | Fits all tables
- | Quick set-up
- | Easy positioning
- | Crafted from Carbon Fibre
- | Ergonomic surface

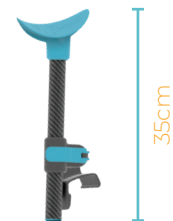
### Specifications



STARBoard



STARTable



STARSupport



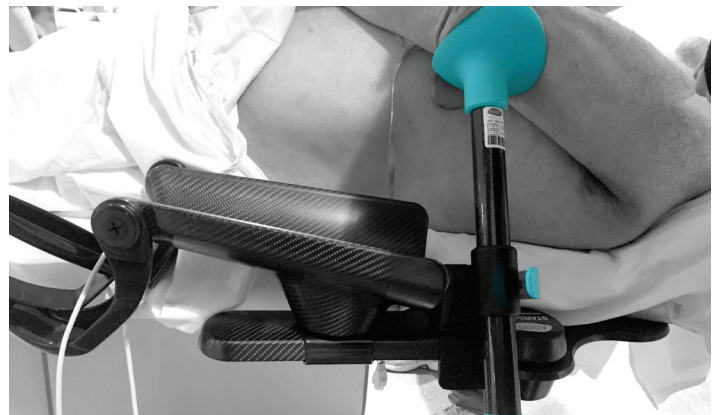
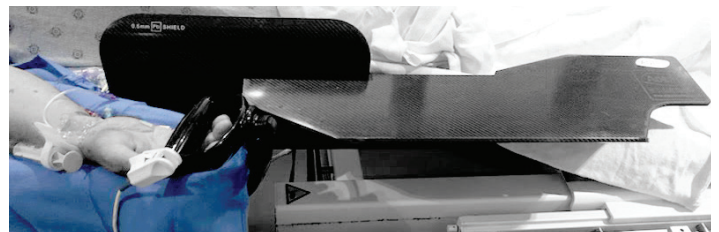
### STARSupport

STARSupport connects to the STARBoard after radial access is gained facilitating left arm procedures for superior patient comfort.

### Applications

#### Interventional Radiology

- Vascular Procedures via the Radial Approach



### Fields you can use this device



Interventional Neuroradiology



Interventional Cardiology



**EC Representative**  
 Emergo Europe  
 Prinsessegracht 20  
 2514 AP The Hague  
 The Netherlands



**Manufacturer**  
 Adept Medical Ltd  
 2-6 McDonald St,  
 Morningside  
 Auckland 1025, New Zealand